



## VININGS

PLAN # 96202                      2,482 SQ. FT.

WIDTH 53' 10"

DEPTH 48' 4"

FOUNDATION: BASEMENT, SLAB

ARTIST'S CONCEPTION MAY VARY FROM ACTUAL PLAN

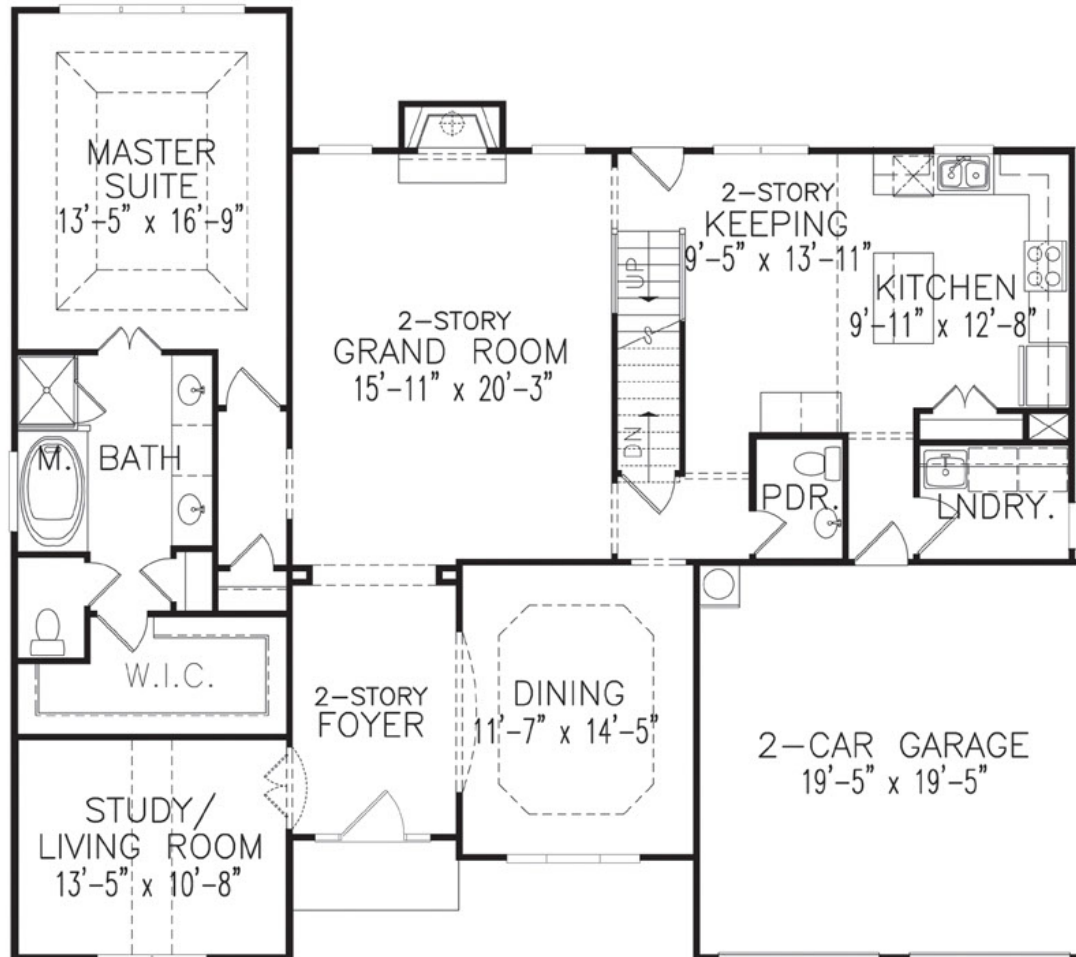
Copyright 2009 , Garrell Associates, Inc.

**GARRELL** 

ASSOCIATES INC.

5991 PARKWAY NORTH BLVD., SUITE D  
CUMMING, GA 30040  
PH.(770)-614-3239 FAX(770)-614-5948  
[WWW.GARRELLASSOCIATES.COM](http://WWW.GARRELLASSOCIATES.COM)





**FIRST FLOOR PLAN**  
 1,773 SQ. FT.  
 GARAGE 391 SQ. FT.

**VININGS**

PLAN # 96202                      2,482 SQ. FT.

WIDTH 53' 10"

DEPTH 48' 4"

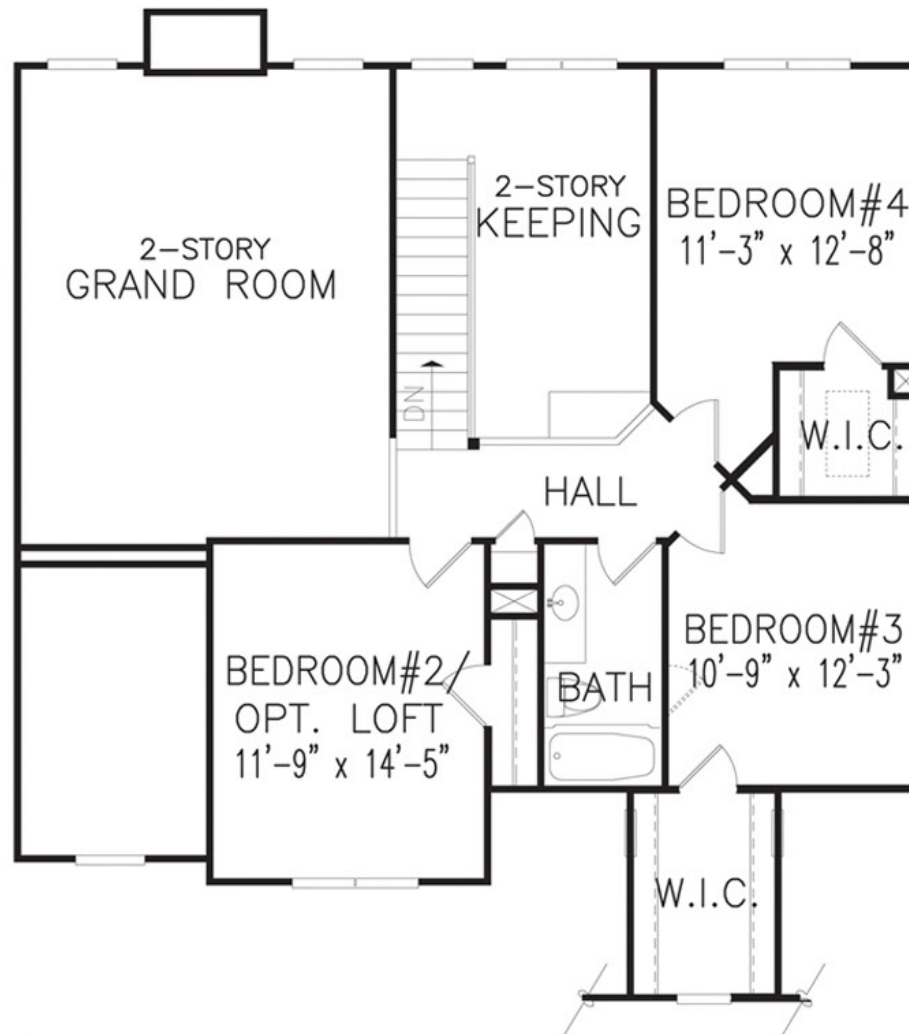
FOUNDATION: BASEMENT, SLAB

ARTIST'S CONCEPTION MAY VARY FROM ACTUAL PLAN

Copyright 2009 , Garrell Associates, Inc.



5991 PARKWAY NORTH BLVD., SUITE D  
 CUMMING, GA 30040  
 PH.(770)-614-3239 FAX(770)-614-5948  
 WWW.GARRELLASSOCIATES.COM



**SECOND FLOOR PLAN**  
709 SQ. FT.

**VININGS**

PLAN # 96202                      2,482 SQ. FT.  
 WIDTH 53' 10"  
 DEPTH 48' 4"  
 FOUNDATION: BASEMENT, SLAB

ARTIST'S CONCEPTION MAY VARY FROM ACTUAL PLAN

Copyright 2009 , Garrell Associates, Inc.

**GARRELL** 

ASSOCIATES INC.  
 5991 PARKWAY NORTH BLVD., SUITE D  
 CUMMING, GA 30040  
 PH.(770)-614-3239 FAX(770)-614-5948  
 WWW.GARRELLASSOCIATES.COM