



ASHLAND MANOR F

PLAN # 17151 3,908 SQ. FT.

WIDTH 89' 4"

DEPTH 73' 4"

FOUNDATION: BASEMENT

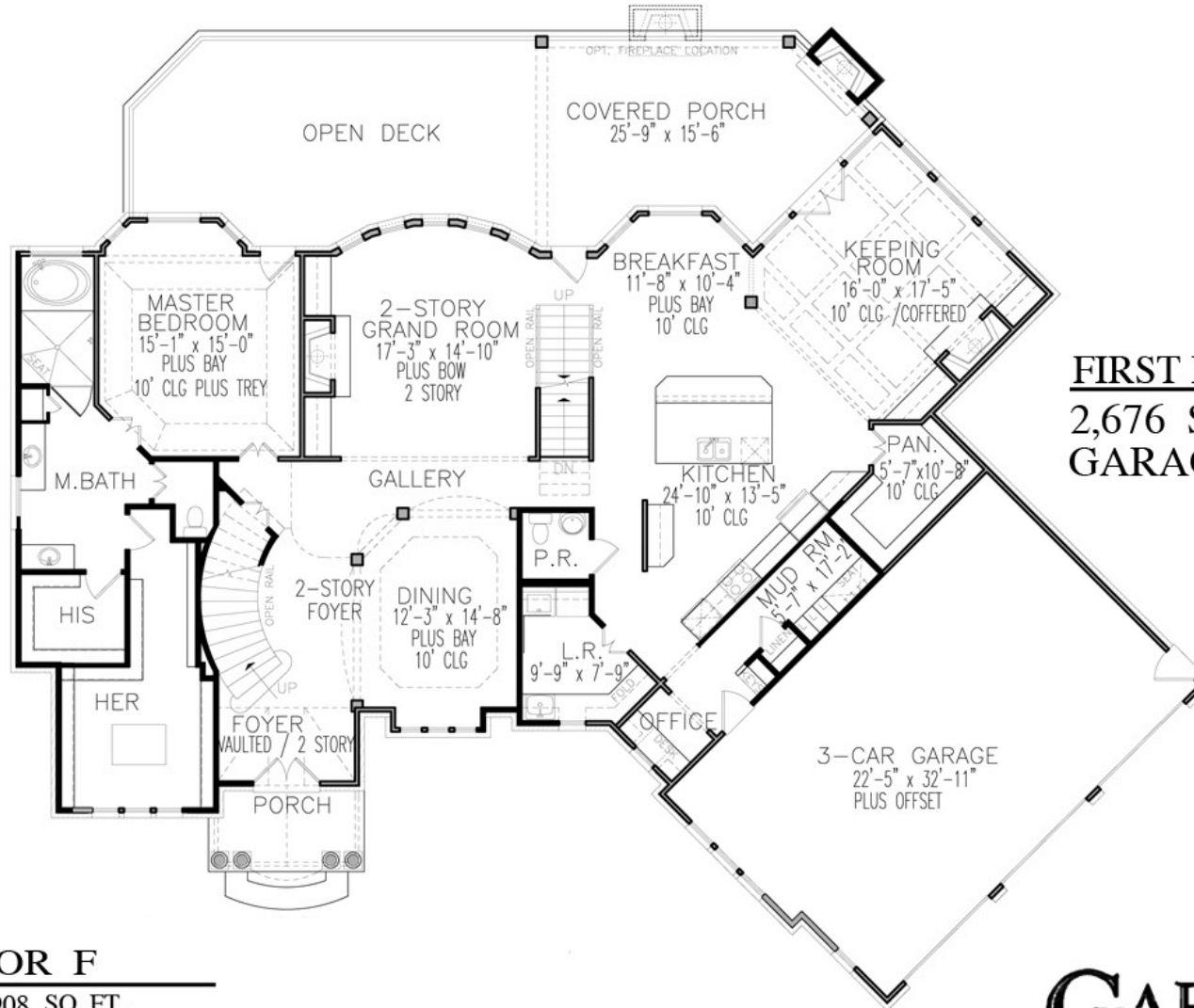
ARTIST'S CONCEPTION MAY VARY FROM ACTUAL PLAN

Copyright 2017, Garrell Associates, Inc.

GARRELL

ASSOCIATES INC.

5991 PARKWAY NORTH BLVD., SUITE D
CUMMING, GA 30040
PH.(770)-614-3239 FAX(770)-614-5948
WWW.GARRELLASSOCIATES.COM



FIRST FLOOR PLAN
2,676 SQ. FT.
GARAGE 775 SQ. FT.

ASHLAND MANOR F

PLAN # 17151 3,908 SQ. FT.
 WIDTH 89' 4"
 DEPTH 73' 4"
 FOUNDATION: BASEMENT

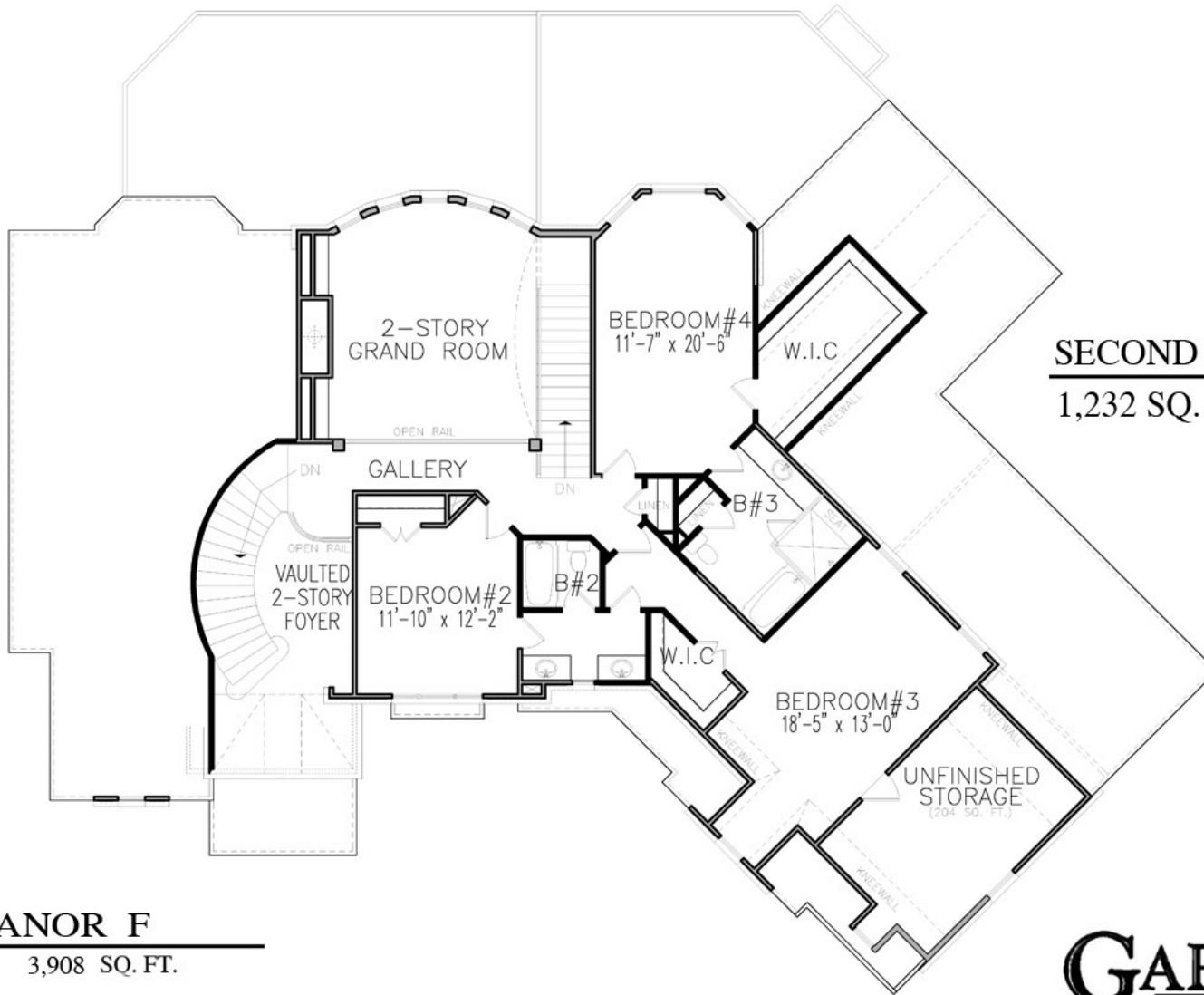
ARTIST'S CONCEPTION MAY VARY FROM ACTUAL PLAN

Copyright 2017, Garrell Associates, Inc.

GARRELL

ASSOCIATES INC.

5991 PARKWAY NORTH BLVD., SUITE D
 CUMMING, GA 30040
 PH.(770)-614-3239 FAX(770)-614-5948
 WWW.GARRELLASSOCIATES.COM



SECOND FLOOR PLAN
1,232 SQ. FT.

ASHLAND MANOR F

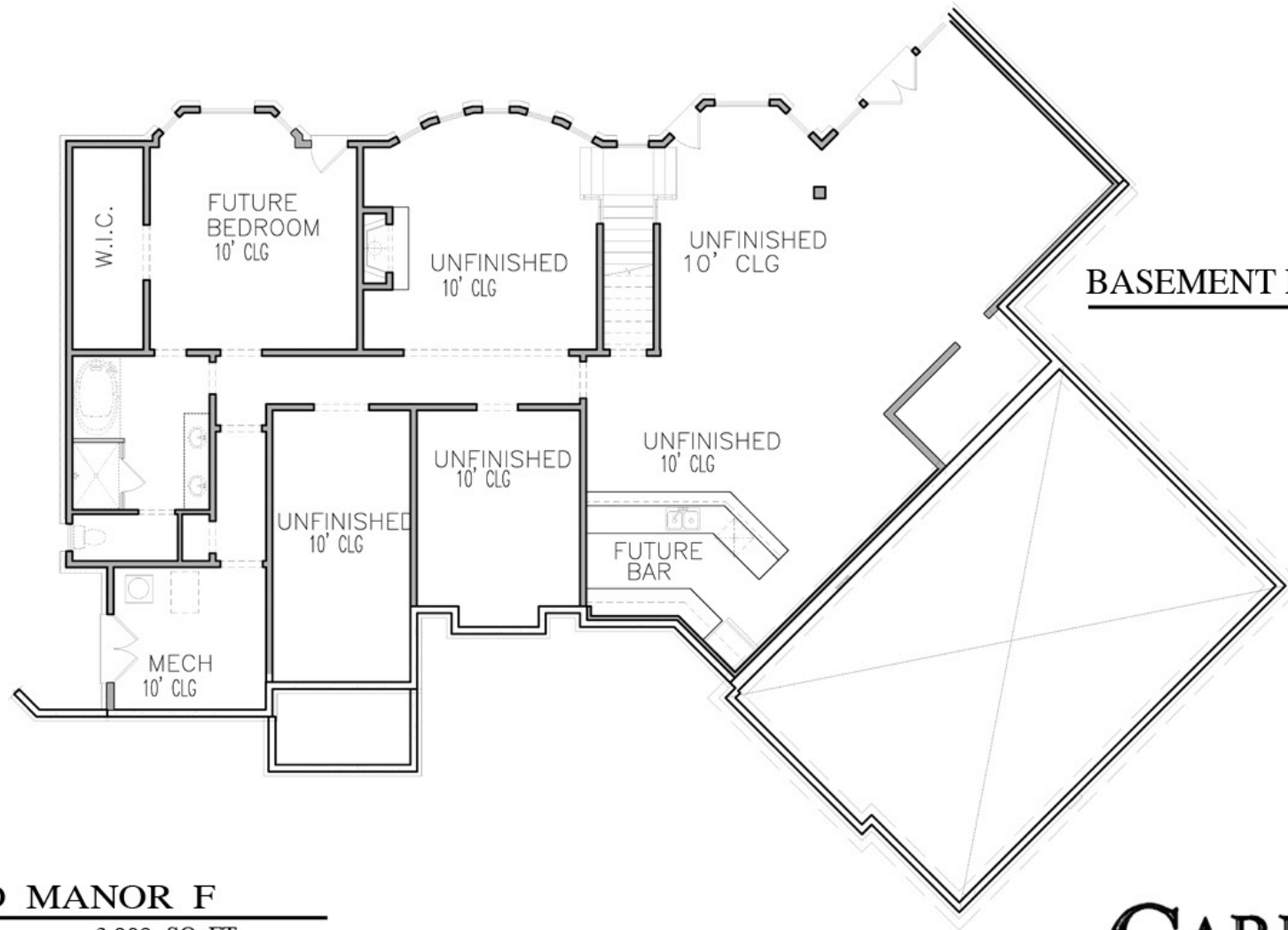
PLAN # 17151 3,908 SQ. FT.
 WIDTH 89' 4"
 DEPTH 73' 4"
 FOUNDATION: BASEMENT

ARTIST'S CONCEPTION MAY VARY FROM ACTUAL PLAN

Copyright 2017, Garrell Associates, Inc.

GARRELL 

ASSOCIATES INC.
 5991 PARKWAY NORTH BLVD., SUITE D
 CUMMING, GA 30040
 PH.(770)-614-3239 FAX(770)-614-5948
 WWW.GARRELLASSOCIATES.COM



BASEMENT FLOOR PLAN

ASHLAND MANOR F

PLAN # 17151 3,908 SQ. FT.

WIDTH 89' 4"

DEPTH 73' 4"

FOUNDATION: BASEMENT

ARTIST'S CONCEPTION MAY VARY FROM ACTUAL PLAN

Copyright 2017, Garrell Associates, Inc.

GARRELL 

ASSOCIATES INC.

5991 PARKWAY NORTH BLVD., SUITE D
CUMMING, GA 30040

PH.(770)-614-3239 FAX(770)-614-5948

WWW.GARRELLASSOCIATES.COM