

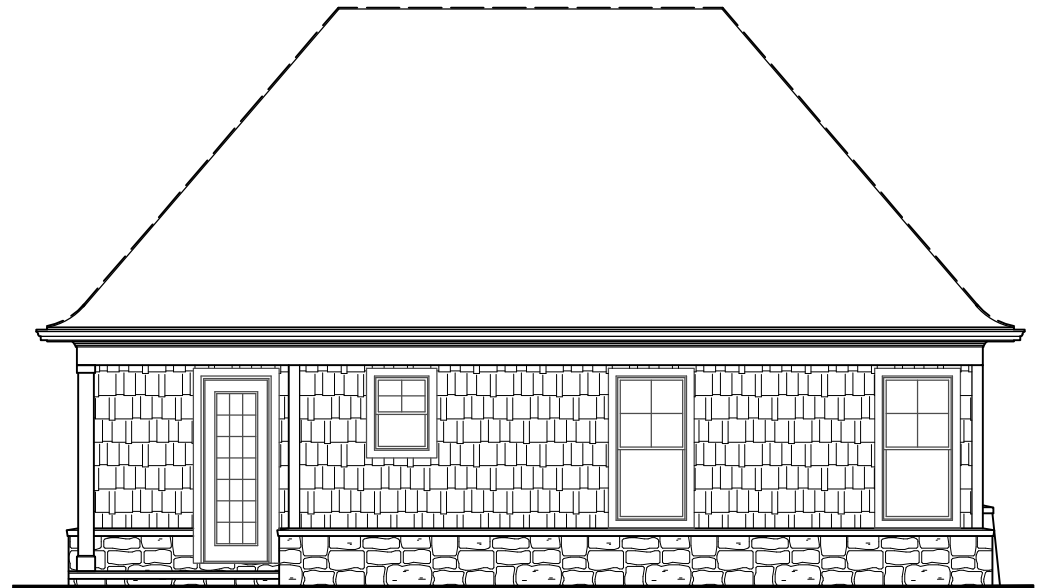
# GARRELL

ASSOCIATES INC.

5991 PARKWAY NORTH BLVD., SUITE D  
CUMMING, GA 30040  
PH.(770)-614-3239 FAX(770)-614-5948  
WWW.GARRELLASSOCIATES.COM



FRONT ELEVATION



REAR ELEVATION

## MOUNTAIN VIEW CREEK

PLAN #19034 793 SQ.FT.  
WIDTH 39'-6" 23'-9" RIDGE HGT.  
DEPTH 37'-6"

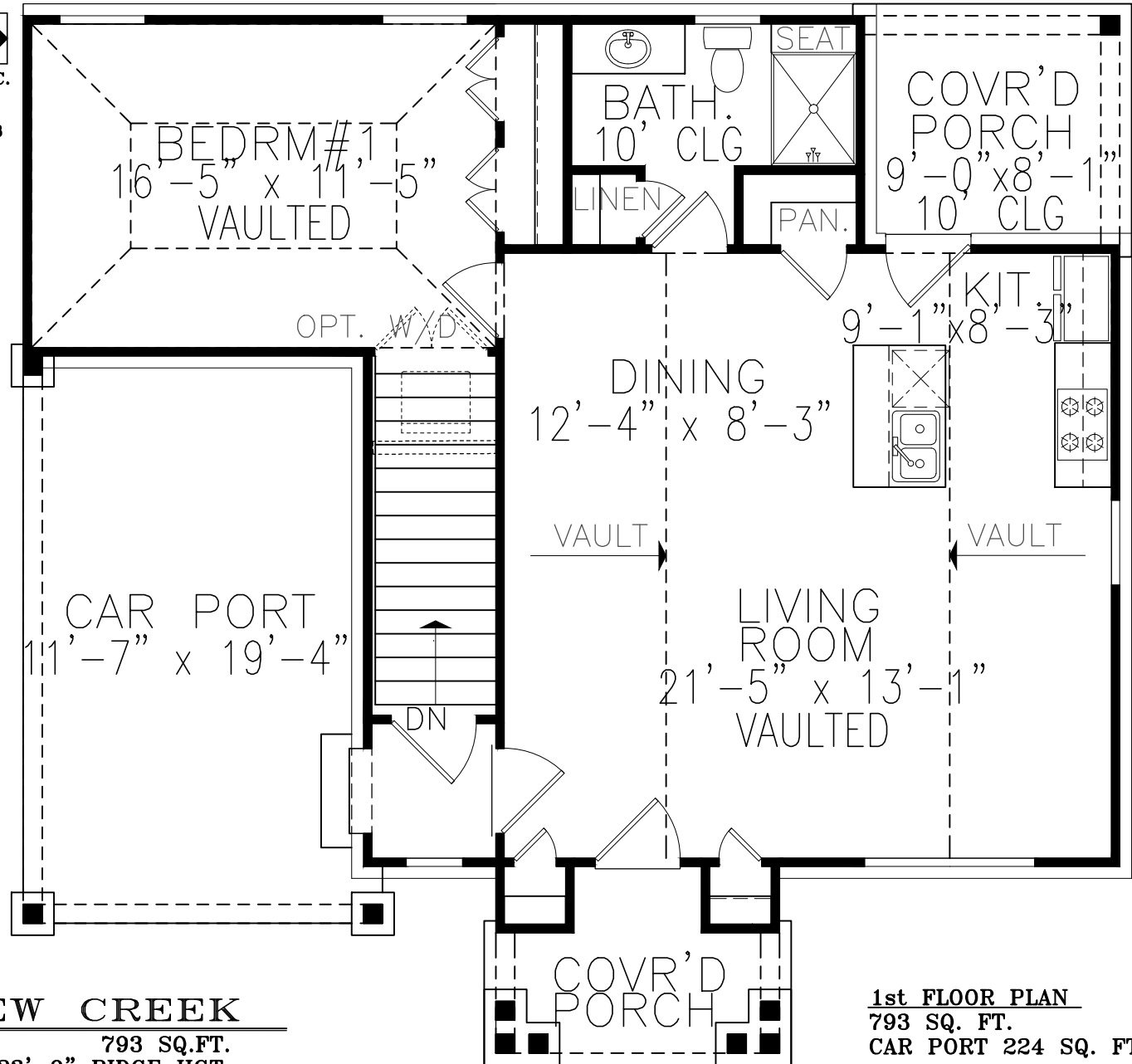
FOUNDATION: BASEMENT

ARTIST'S CONCEPTION MAY VARY FROM ACTUAL PLAN

# GARRELL



ASSOCIATES INC.  
5991 PARKWAY NORTH BLVD., SUITE D  
CUMMING, GA 30040  
PH.(770)-614-3239 FAX(770)-614-5948  
WWW.GARRELLASSOCIATES.COM



## MOUNTAIN VIEW CREEK

PLAN #19034  
WIDTH 39'-6"  
DEPTH 37'-6"

FOUNDATION: BASEMENT

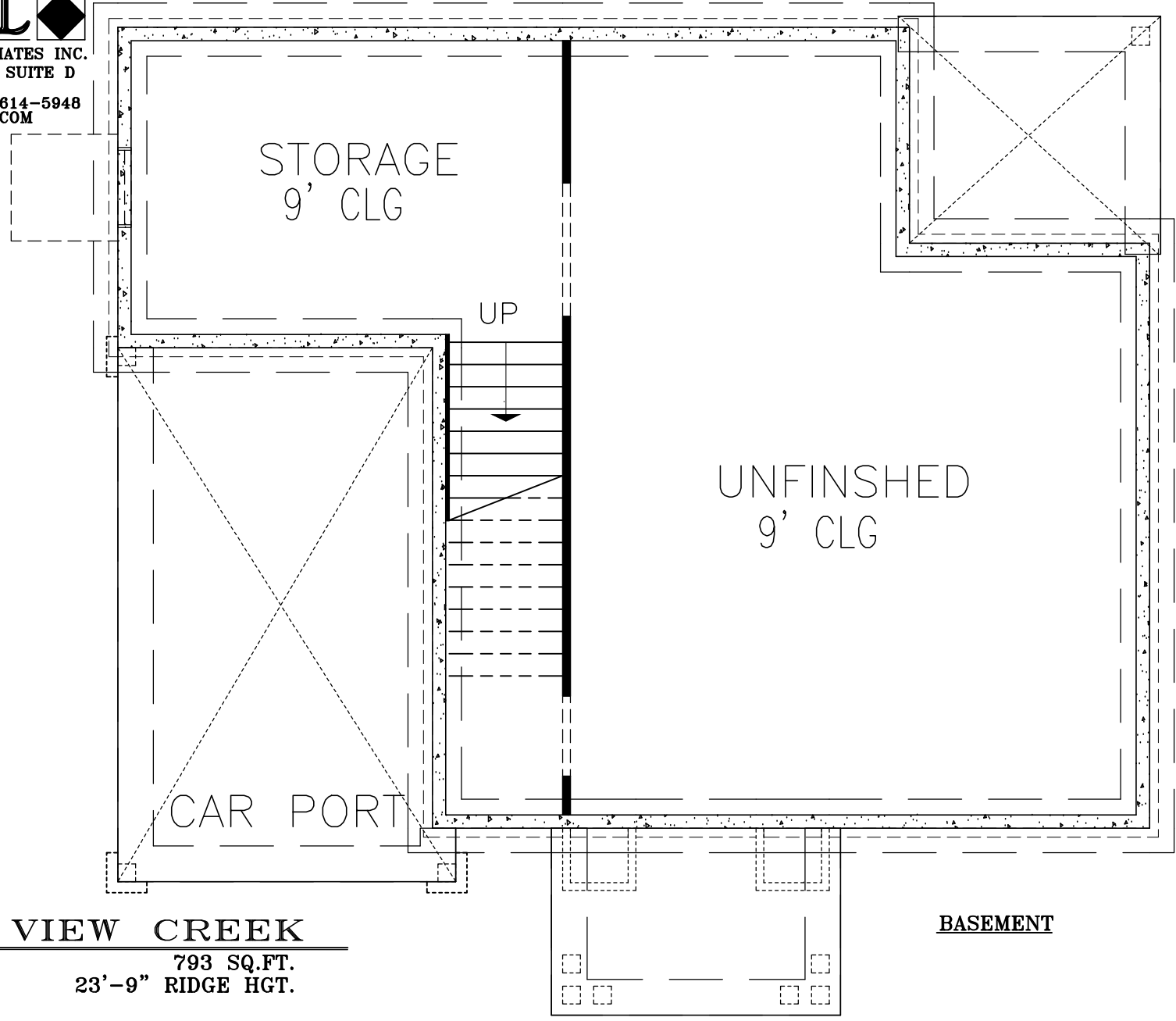
793 SQ.FT.  
23'-9" RIDGE HGT.

**1st FLOOR PLAN**  
793 SQ. FT.  
CAR PORT 224 SQ. FT.

# GARRELL



ASSOCIATES INC.  
5991 PARKWAY NORTH BLVD., SUITE D  
CUMMING, GA 30040  
PH.(770)-614-3239 FAX(770)-614-5948  
WWW.GARRELLASSOCIATES.COM



## MOUNTAIN VIEW CREEK

PLAN #19034  
WIDTH 39'-6"  
DEPTH 37'-6"

793 SQ.FT.  
23'-9" RIDGE HGT.

FOUNDATION: BASEMENT

**BASEMENT**